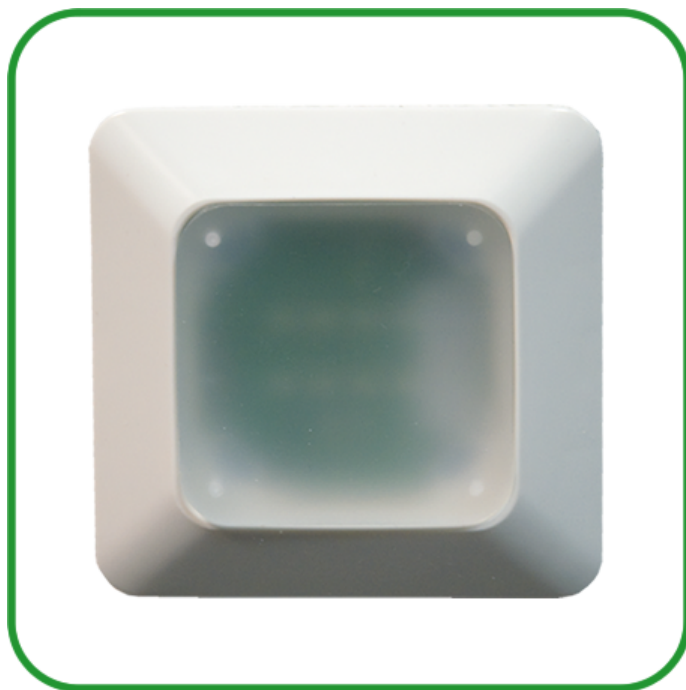


FIREscape

EL-5L Addressable Step Luminaire



Features

- ▶ LED technology
- ▶ Integral back-up battery
- ▶ Semi-flush fit
- ▶ Ideal for low-level lighting

Description

An LED-based, addressable step lighting unit, which is installed semi-flush using a back-box. This attractive and discreet unit is ideal for lighting stairways and changes in floor levels.

Specification	
Case colour	Ivory
Material	Fire resistant ABS plastic
Fire class	UL94 V-O
Operation time	1h to 3h
Dimensions (mm)	80W x 80H x 12D (when fitted)